



**WOODHILL**  
*estate*

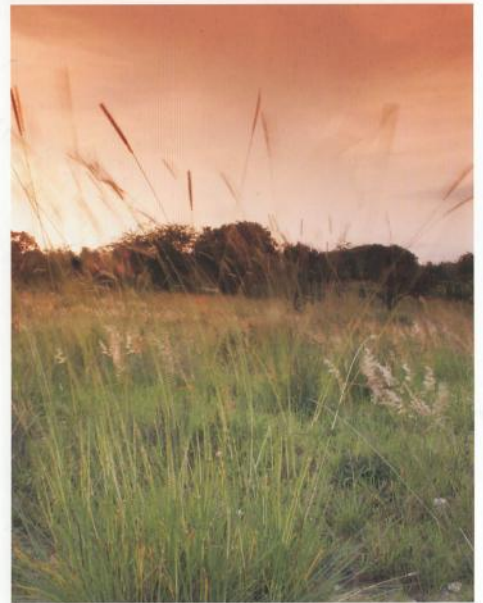


**TYSOCON**  
PROPERTIES

**BETTING NEW STANDARDS**



*Your passion for Living*





## *Country ambience*

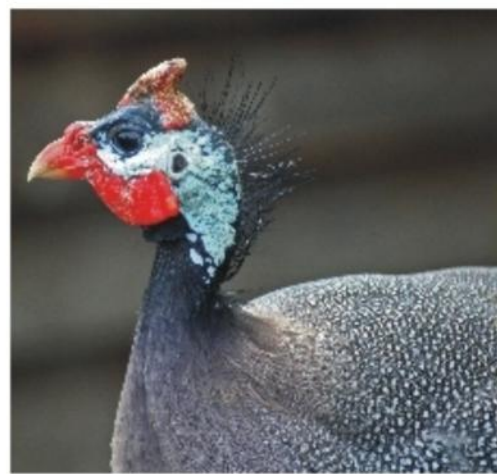
Discover a **lifestyle** with perfect **balance**.

A **secure** lifestyle estate that offers you perfect **quality and convenience** in a  
**natural setting**.

Experience the **spectacular views** over the **heart of the bushveld** with its  
breathtaking sunsets.



*Inspired living*





## *Capture the view*

The property is **situated on a hill** with possibly the only 360 degree view over  
**Polokwane** and surroundings.

The northern slopes make it ideal to design the **perfect house with a view**  
**onto the mountain** ranges in the distance.

# WOODHILL *estate*



POLOKWANE'S NORTHERN GATEWAY

WOODRIDGE  
IN WOODHILL





## *Comfortable Living*

This is an opportunity of a lifetime to secure your home in an upmarket development with the lifestyle you have dreamed of. Paradise does exist. It is a lifestyle lived at your leisure. It is time spent – in nature, with your family, away from the mad rush. Woodhill means natural living and space by design.

Woodhill is within walking distance from the Polokwane Regional Mall and schools, only 5 minutes from the Thornhill Convenience Shopping Centre, but far enough from the hustle of the city.





## *Creating peace of mind*

State-of-the-art security— **roaming guards at night** for absolute peace of mind...

Comprehensive security includes advanced electronic systems backed by security personnel. A perimeter wall, topped by electric fencing is backed by 24 hour manned access control.





*Perfect quality with high life convenience*



Woodhill offers you  
the perfect  
opportunity to experience life  
.... naturally.